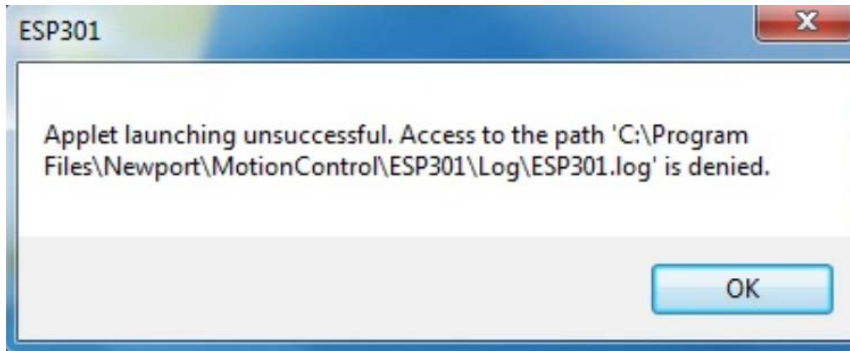


When trying to launch the GUI softwares for CONEX, ESP301 or SMC100 controllers on a Win 7 computer, you may see this error:



When you are not the Administrator of your PC, Windows 7 disable writing in the "Program Files" or "Program Files(x86)" folders. So, the GUI cannot write in the .log or .ini files.

If getting full Admin rights is an issue that you cannot resolve, there is a workaround.

Simply copy the "Motion Control" folder, found here: "C:\Program Files(x86)\Newport\MotionControl", to your "My Documents" folder.

Then run the software from this new location.